

CarXPC 700TS Touch Screen VGA LCD Monitor User Guide



The model and serial numbers are located on the rear of the unit. Please record these numbers in the spaces provided below, as well as the dealer name, address, and telephone number. Please refer to these records whenever speaking to your dealer regarding this product.

Model # _____ **Serial #** _____
Dealer Name _____
Street Address _____
City _____ **State** _____ **Zip** _____
Phone # () _____ **Purchase Date** ___/___/___

NOTES

NOTE 1: If you are trying to connect the monitor to a laptop computer, please make sure to enable the 15-Pin D-SUB external monitor output located at the back of your laptop computer. Some laptop computers have three modes: Laptop Display Only, Laptop Display plus External Monitor, and External Monitor Only. If this is the case, please switch to the External Monitor Only mode.

NOTE 2: Touch Screen device driver must be installed onto your computer in order for the Touch Screen to become functional. A 4-Wire Resistive Touch Screen panel is used in the 700TS monitor. Touch Screen drivers and software for different operating systems can be found in the included CD-ROM disc. You can refer to this manual for a walkthrough of Touch Screen Driver installation under Microsoft Windows XP.

NOTE 3: The maximum voltage supported by the monitor is **24V DC**. Feeding the monitor with higher voltage will damage the monitor and void the warranty. Please use a fused power source if you decide to wire the monitor directly to your car's electrical system. It is also crucial that you check the polarity of the connection. Wrong polarity will damage the monitor.

NOTE 4: If the monitor is not displaying the VGA signal properly, the VGA signal might be out of range. Please set your display refresh rate to 60Hertz.

NOTE 5: Please note that the LCD screen is made with high-precision technology. However, black points or bright points of light (red, blue, or green) may appear constantly on the LCD screen, and irregular colored stripes or brightness may appear on the LCD screen. This is not malfunction. (Effective dots: more than 99.999%)

NOTE 6: TFT LCD monitors are driven by CCFL backlight system. It takes time for the CCFL backlight to warm up and reach its full brightness. Therefore, the screen will look dimmer at startup.



CarXPC uses the Xenarc Technologies 700TS VGA LCD Monitor

External Buttons, Hot keys description:

Note1: The OSD Menu is only available when a video source is present.

Note2: The Hot keys are only available while the OSD menu is off.

“M” – Stands for Menu. This button is for OSD menu on/off toggling.

“S” – Stands for Select. Use this button for selection while OSD menu is on. Use this button to bring on the Second OSD menu when primary OSD menu is off (700TS only).

“^” – Stands for Increase. Use this button to increase value while OSD menu is on. Use this button as a hot key to increase brightness.

“v” – Stands for Decrease. Use this button to decrease value while OSD menu is on. Use this button as a hot key to decrease brightness.

Primary On Screen Display functions description:

The Primary OSD can be turn on by pressing the button “M”.

Bright

- Adjust brightness by pressing the Increase/Decrease buttons. *Increase the number for higher brightness. Decrease the number for lower brightness.*

Contrast

- Adjust contrast by pressing the Increase/Decrease buttons. *Increase the number for higher contrast. Decrease the number for lower contrast.*

Horz Pos

- Adjust Horizontal position by pressing the Increase/Decrease buttons.

Vert Pos

- Adjust Vertical position by pressing the Increase/Decrease buttons.

Phase

- Adjust CLK phase alignment by pressing the Increase/Decrease buttons. (Image flicker can be avoided by CLK phase adjustment.)

Auto Detect

- Adjust display automatically.



Secondary On Screen Display functions description:

The Secondary OSD can be turn on by pressing “S” while Primary OSD is.

Backlight - Adjust the CCFL backlight output level.

Default - Load default setting.

External Specifications:

Video Source Input

- RGB analog male connector (15-Pin D-SUB) x 1

Touch Panel I/O

- USB connector x 1

Power Source Input

- Single 12V DC_IN (Supports 11V ~ 24V)

External Buttons Input

- TACT OSD buttons for Menu/Select/Increase/Decrease
- TACT PWR button for power switch

Internal Specifications:

LCD Module : 7” Digital TFT

LCD LCD Native resolution : 800 x 480

Supported display resolution : 640 x 480 ~ 1600 x 1200

Supported refresh rate : 60 Hertz

Hot Keys : Available while in off Menu

Colors : 18-bit (262,144 Colors)

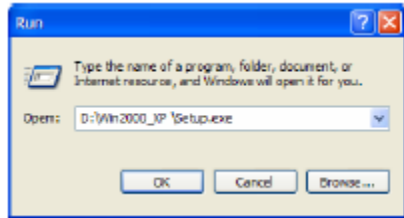
OSD Menu : Digital Style

Inverter Inside : Options (single lighter w/o PWM)

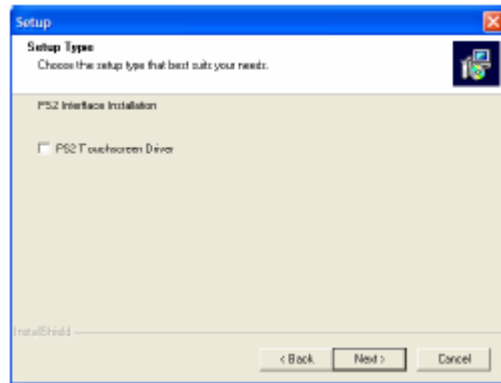


Here is a simple walk through of Windows XP Touch Driver Installation.

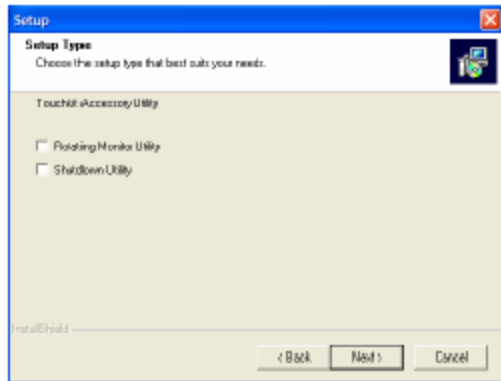
1. Click on Start, Run, and Enter D:\Win2000_XP \Setup.exe (Please change the drive letter corresponding to the drive containing the installation CD). Click **OK**.



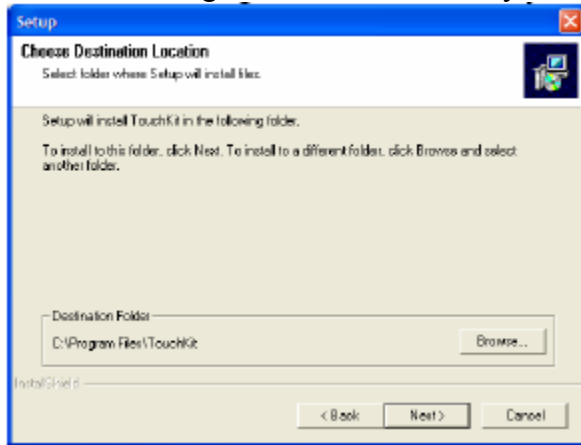
2. The Install Wizard window appears. Click **Next**.
3. Click **Next** to continue. Please leave the check box next to “PS2 Touchscreen Driver” **unchecked**.



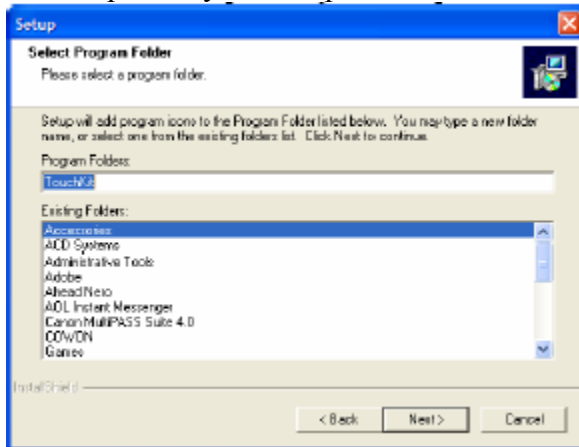
4. Select the Rotating Monitor Utility and/or the Shutdown Utility if you want to install them and click on **Next** to continue. The Rotating Monitor Utility allows you to rotate your display while the Shutdown Utility provides you with one-click shutdown.



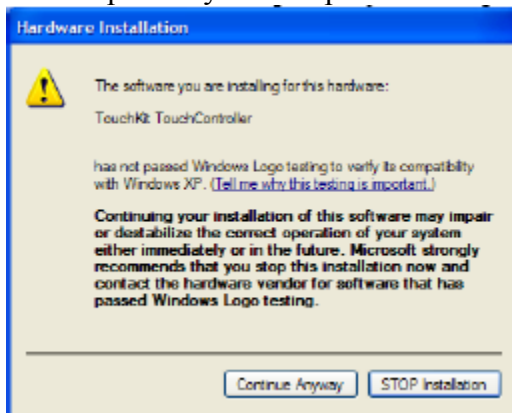
4. Click **Next** to accept the Destination Directory default, shown below. Click on **Browse** to change Destination Directory.



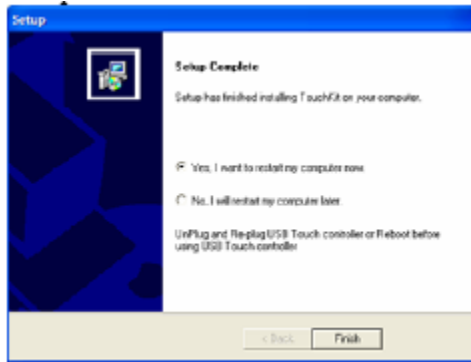
5. Click **Next** to accept the Program Folder default, shown below. Files will then start to be copied to your computer.



6. When the warning that says this software has not passed Windows Logo test, please click on **Continue Anyway** to continue the installation. File will continue to be copied to your computer.

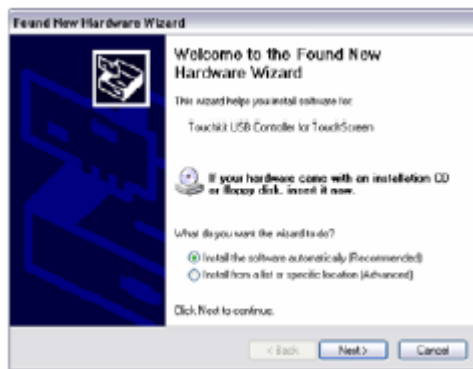


7. Click **Finish** to finish the installation. You will be asked to restart your computer.

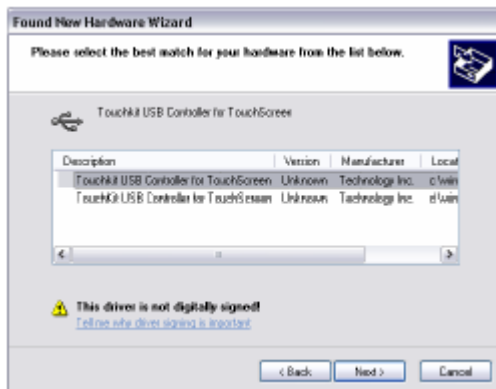


8. Remove the CD and **Restart your computer**. After Windows XP is finished loading, connect the 700TS USB cable to one of your computer's USB Ports.

9. Windows XP will start "Found New Hardware Wizard" automatically upon detection of the USB Touch Controller. Click on **Next** to continue.



10. Click on **Next** to continue.



11. Click Finish to finish Setup. Your Touchscreen is ready to use now. You can click on the icon **Touchkit** located on your desktop to launch the Touchscreen program for various settings and adjustments.

