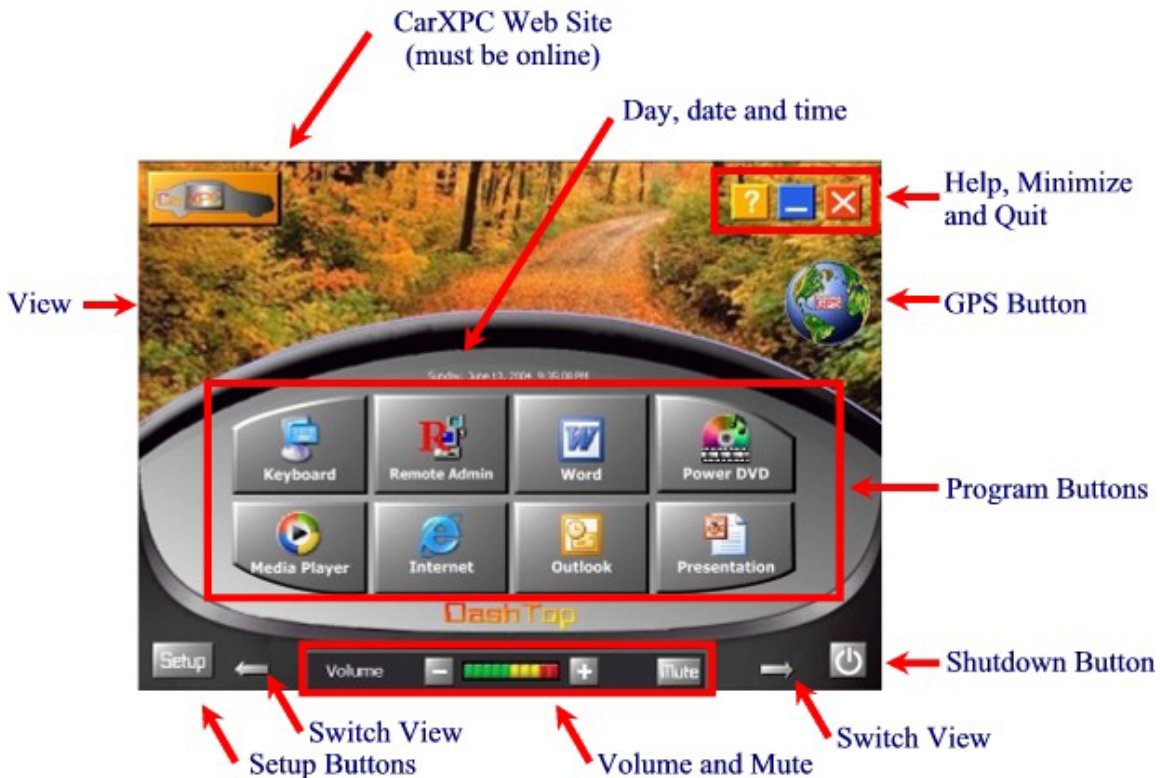


DashTop Help

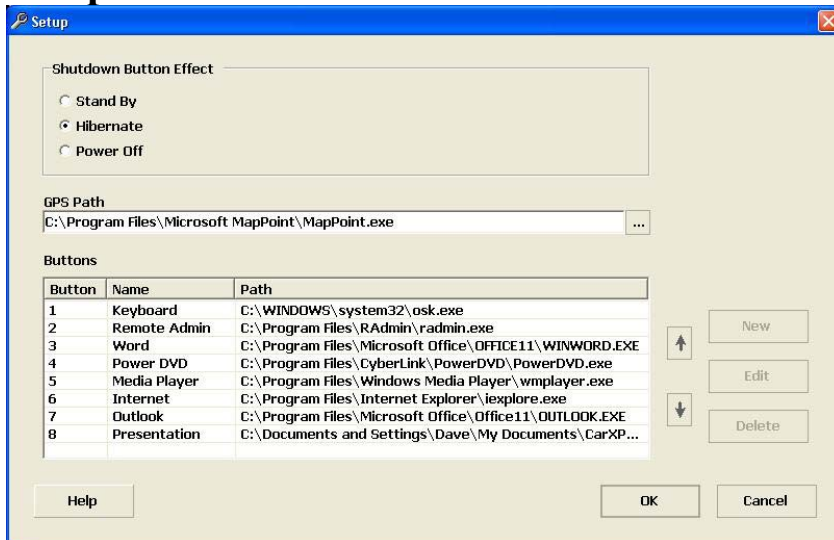
Main Screen



The image above shows the main screen of the DashTop software and outlines the various elements of the screen. From here you can launch programs and control some basic functionality of your CarXPC in-vehicle computer. The various elements are:

- CarXPC logo – Opens a Web browser with the CarXPC home page
- Help button – Opens this file
- Minimize button – Minimizes the DashTop software
- Quit button – Closes the DashTop software
- View – A changeable background image
- GPS button – Runs the GPS software (this is only visible if you configure it on the Setup screen)
- Clock – A real-time clock showing the day, date, and time
- Program Buttons – Each button will either run a program or open a document, depending on how the button is configured in the Setup screen
- Setup button – Opens the Setup screen so you can configure the DashTop
- Switch View buttons – Switches the View to display a different image. If you wish to add your own images to the selection of background images that the DashTop can choose from, you will need to create an image that is 800x302 and save it as a PNG file in the Images\Backgrounds folder.
- Volume buttons – Increase, decrease, or mute the volume of the system
- Shutdown button – This will either perform a Stand By, Hibernate, or Power Off, depending on how you configure the button in the Setup screen

Setup Screen



The image above shows the main screen of the DashTop software. From here you can configure how that DashTop software looks and behaves. There are three main items that can be configured from this screen:

1. The effect of the Shutdown button
2. The location of your GPS software (if installed)
3. The locations of any other programs or documents that you would like to be able to run from the DashTop

1) Shutdown Button Effect

This option allows you to choose what will happen when you click the Shutdown button (lower right hand corner of the screen):

- a) Stand By – The CarXPC goes into a low power mode, saving the state of all your open programs in memory. When you turn the CarXPC back on, it restarts very quickly and returns all your running programs to the state they were in before the Stand By. (Note: Some programs including the current touchscreen program for the CarXPC monitor have trouble in this mode. We suggest using Hibernate mode.)
- b) Hibernate – Similar to Stand By, except that instead of saving your state to memory, the state is written to the hard disk and the CarXPC turns off completely, drawing only minimal power. When you turn the CarXPC back on, all your running programs return to the state they were in before hibernation. This option takes a little more time than Stand By, since the data is being written to and read from the hard disk instead of memory. The advantages you gain from this additional wait time are:
 - a. The CarXPC draws little to no power
 - b. This mode seems to work better with a wider variety of software than Stand By mode
- c) Power Off – This option performs a complete system Shutdown, closing all open programs and turning off the CarXPC completely. When you turn the CarXPC back on, it must do a complete boot and any program running before the Shutdown are not reopened.



2) GPS Path

This option allows you to specify the path to any GPS software you may have installed on your CarXPC. If you specify a program here, the GPS button will appear on the DashTop on the right side of the screen. To set this up, you can either type a full path to the executable for the GPS software, or you can use the browse button located to the right of this box to locate your GPS program file.

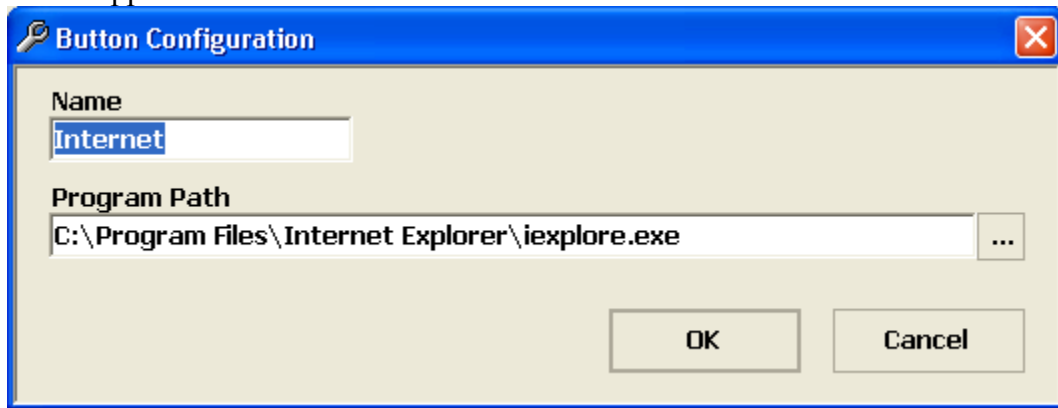
3) Buttons

This section allows you to configure up to eight buttons that will be visible on the DashTop. Each button can be configured to start a specific program or to open a specific document.

Here is a brief description of the screen elements involved in this section:

- **Button column** – A number from 1 to 8 indicating the position this button will occupy on the DashTop. Numbers 1-4 will appear in the top row. Numbers 5-8 will appear in the bottom row.
- **Name column** – The name (user definable) of the specified button. This text will appear on the button.
- **Path column** – The full path to the program or document file that you want to open when this button is clicked.
- **New button** – This will create a new button in the list and open a screen to allow you to configure it.
- **Edit button** – This will open a screen to allow you to edit the button that is selected in the list.
- **Delete button** – This will delete the button that is currently selected in the list.
- **Up arrow** – This will move the selected button up in the list.
- **Down arrow** – This will move the selected button down in the list.

New/Edit button: When you click the New button or Edit button, the following screen appears:



Here you can specify the name and the path of the program or document that you want to start when the button is clicked.

- **Name** – The text that you specify here will be displayed on the button. The DashTop software will shrink this text to make sure it fits on the button. We suggest you keep this relatively short (16 characters or less).
- **Program Path** – This will be the full path to the program executable file or the document file that you want to start when the button is clicked. You can either type the path in directly or click the browse button to the right of this box to browse for the file. Depending on what file you select here, the DashTop software will find an appropriate icon and display it on the button. An example of this can be seen below:



When you are done, click OK to save your changes.